



# Host a Mini Ekiden!

*An invitation to primary schools across the UK:*

Join in the excitement about Japanese style relay racing by holding your own Mini Ekiden during your school sports lessons this June

## THE FT NIKKEI UK EKIDEN: A long-distance running relay race

Launched in 2024 to mark the 100th anniversary of the Japanese race, the Hakone Ekiden, and the State Visit of the Emperor of Japan to the UK, the FT Nikkei UK Ekiden brings Japan's iconic relay running race to the UK.

The race this year is on Friday 20th June 2025. 15 university and 15 corporate-sponsored teams will compete along the picturesque Thames Path from Brocas Field in Windsor to King's Meadow in Reading and back. Each runner passes the symbolic Japanese tasuki sash, representing teamwork, endurance, and collective effort.

The event aims to strengthen the bond between the UK and Japan further by introducing a slice of Japan's renowned sports culture to the UK. The Mini Ekiden is one of several activities to include the wider UK and Japanese community in the FT Nikkei UK Ekiden.



## WHAT IS A MINI EKIDEN?

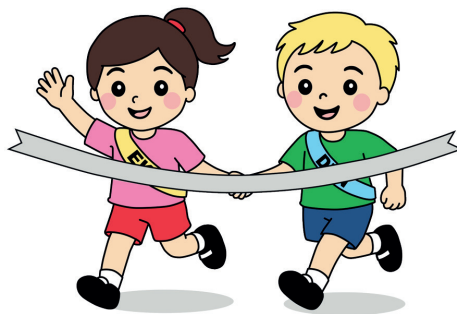
We're inviting primary schools across the country to host a Mini Ekiden in their PE class throughout June. This is a fantastic opportunity for children to learn about Japanese culture, explore the traditions of the ekiden race, and understand the importance of teamwork in sports. It's an exciting way to introduce students to the rich history of ekiden while having fun!



## WHAT THE SCHOOLS WILL RECEIVE

### An Ekiden-in-a-Box

- A Mini Ekiden Guide that includes:
  - Information about ekiden racing
  - An outline of the FT Nikkei UK Ekiden Year 2 and how to get involved
  - Suggestions on how to host your own "Mini Ekiden"
  - Useful suggestions for classroom activities and helpful links
- 8 tasuki (sashes) to use in your Mini Ekiden
- An "Eki and Den" sticker pack



## ENTRY REQUIREMENTS

- Fill out a [Google Form](#) with your school's information by the end of April
- Hold your Mini Ekiden before the big race on Friday 20th June
- Share photos and videos of your Mini Ekiden with the UK Ekiden team and post them on the school's website/social media

*For schools located between Windsor and Reading or those wishing to travel to spectate on the day, please check out our website for spectator information, or email [info@ukekiden.com](mailto:info@ukekiden.com) so we can direct you to the best locations from which to support.*



Be a part of the FT Nikkei UK Ekiden Year 2!

